



ZeroU

## RapidNet Ready Cabinets

Better Technology Through Innovation

**COOPER** B-Line

**HellermannTyton**  
Network Sciences

# ZeroU

## The RapidNet Ready Cabinet



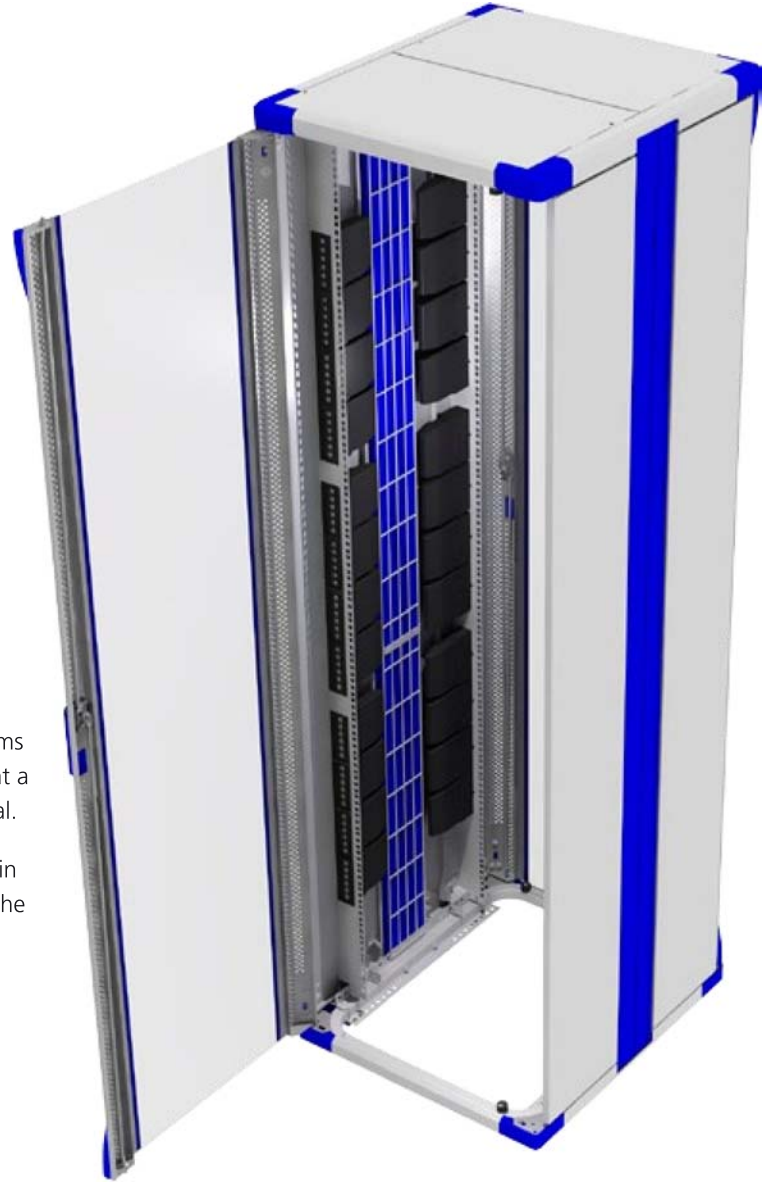
- Save up to 20% of rack space
- Reduce installation times by up to 85%
- Reduce energy costs
- ZeroU – The space saving solution for data centres and comms rooms

HellermannTyton, together with Cooper B-Line, have developed a RapidNet ready cabinet that accommodates RapidNet cassettes vertically without taking up any horizontal rack space.

- Maximises space for active equipment
- Provides additional space for future network expansion
- Up to 288 additional copper ports and 1,152 in fibre (based on 4 mounting posts in 42U cabinet)
- Accommodates fibre and copper RapidNet
- Improves air flow through the cabinet

The cabinet is ideal for the data centre environment and comms rooms where space is limited. Additional connectivity comes at a premium and maximising revenue per square metre is essential.

The RapidNet cassette simply pushes into the shroud, already in situ on the cabinet upright. The cable looms are then tied to the mesh on the side of the cabinet



## The RapidNet Solution

### Reduce installation times by up to 85%

RapidNet is HellermannTyton's innovative and fully patented pre-terminated, pre-tested and pre-labelled 'plug and play' cabling system.

- Pre-terminated, pre-tested 'Plug and Play' system
- No on site termination required
- Reduce installation times by up to 85%
- Available in Cat6A, Cat6, Cat5E and Fibre
- Faster investment to revenue stream
- Cut downtime dramatically in a 'business as usual' project



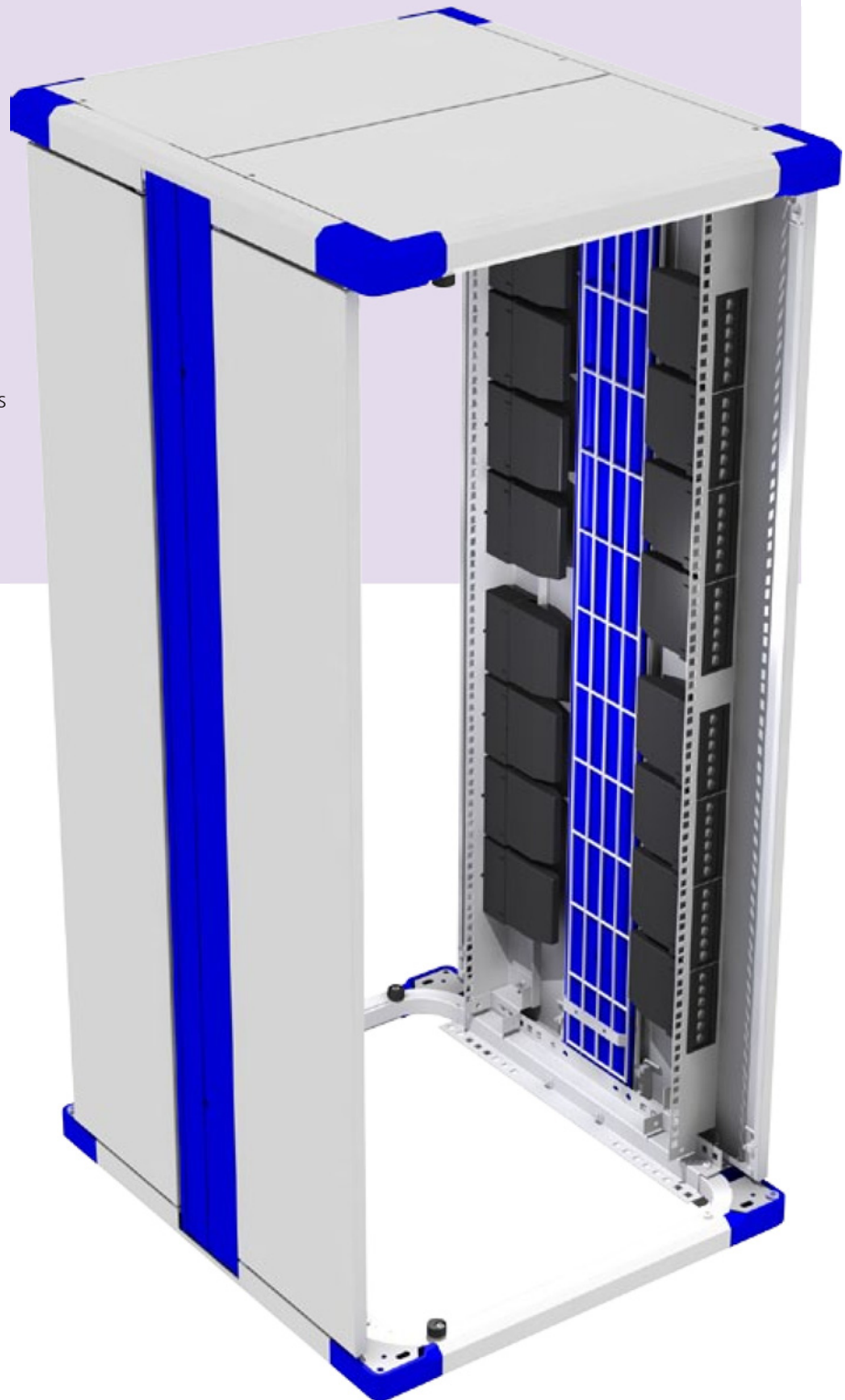
## RapidNet Options

- Available in Cat6A, Cat6, Cat5E and Fibre
- Configurations include cassette to cassette, cassette to RJ45, cassette to keystone jack, cassette to LC or SC terminated ends, cassette to fan-out
- All cassettes have easy push clip mechanism
- Fibre options in pre-terminated and MTP versions
- RapidNet blanks available for future expansion and to aid airflow and cooling in the cabinet
- Every copper and fibre link comes with certified test results

## ZeroU Applications

**The ZeroU cabinet** offers many options making it suitable for a number of different applications. The 22 and 27U options are the smaller cabinets in the range and are ideal for the smaller comms room. Where additional patching and airflow are important but in an area where space is limited, the ZeroU cabinet can offer up to 192 additional ports for connectivity.

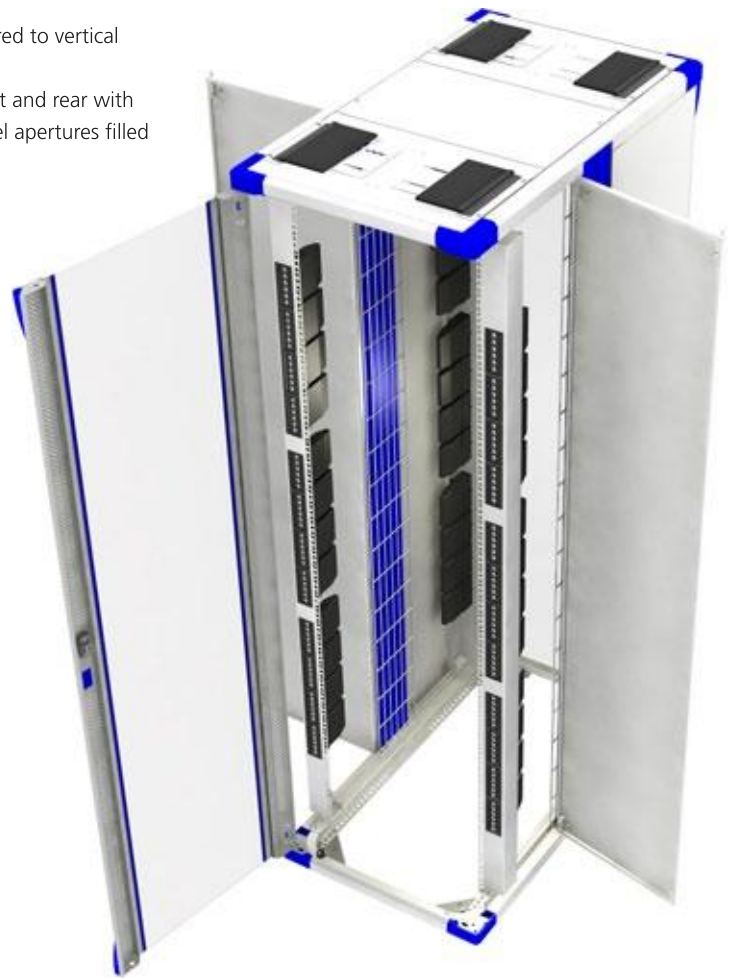
**The 42 and 47U cabinets** are more suited to the data centre environment where significantly more patching and active equipment is required. The added height of the cabinet offers additional patching for up to 288 ports in copper or 576 in LC fibre. The different sized cabinets for the varied applications can be used as 'patching only' cabinets or as 'mixed technology' cabinets. In both instances the ZeroU cabinet offers the benefit of increased patching and improved air flow.



## RapidNet Standard Cabling Cabinet

Each assembly is comprised of;

- Basic Access cabinet frame fitted with 2 x pairs of RapidNet adjustable 19-inch mounting angles. Default positions for rails are 128mm from front and rear of the cabinet.
- Cabinet fitted with 4 adjustable jacking feet.
- Flat form 170mm wide cable basket fitted centrally with both sides secured to vertical centre frame extrusions.
- Top panel assembly comprised of enhanced brush strip panels fitted front and rear with brush strip entry and drop off positioned both sides. Remaining top panel apertures filled with plain panels.
- Quick fit plain side panels fitted both sides.
- Fitted with standard glazed doors front and rear. Doors fitted with quick release hinges and two point locking espan assembly actuated via key locking swing handle.
- Supplied with standard earth kit for on site fitting.
- Product supplied fully assembled and palletised as standard (option to flat pack for local assembly subject to additional flat pack costs).
- Product supplied finished in standard light grey with blue central extrusions, trims and ancillary hardware. Cabinet internal components finished in silver.



## RapidNet Cat6A Cabling Cabinet

In addition to RapidNet Standard Cabling Cabinet Specification;

- Each rail fitted with RapidNet grounding bar assembly.

## RapidNet Active Cabling Cabinet

In addition to RapidNet Standard Cabling Cabinet Specification;

- Basic Access cabinet frame fitted with 2 x pairs of RapidNet adjustable 19-inch mounting angles. Default positions for rails are 128mm from front and rear of the cabinet.
- Blanking baffles fitted to front LH mounting angle and rear RH mounting angle to suit equipment configuration requiring front to rear as well as right to left air flow. Blanking baffles incorporate 19-inch apertures with blanking plates. Blanking baffles can be configured to be mounted at the front of the cabinet should users want to configure the cabinet to suit equipment requiring only front to rear air flow.
- Fitted with high flow server doors front and rear with each door providing up to 122% free area for enhanced air flow. Doors fitted with quick release hinges and two point locking espan assembly actuated via key locking swing handle.

## RapidNet Cat6A Active Cabling Cabinet

In addition to RapidNet Active Cabling Cabinet Specification;

- Each rail fitted with RapidNet grounding bar assembly.

## Cabinet Retro-fit Option

All existing Cooper B-Line Access cabinets can be 'converted' to become RapidNet ready and house the ZeroU RapidNet rail.

Below are the part numbers for retro-fit ZeroU RapidNet rails:

- 22U Access Cabinet – AVM22HTRN
- 27U Access Cabinet – AVM27HTRN
- 42U Access Cabinet – AVM42HTRN
- 47U Access Cabinet – AVM47HTRN

Please note that part code is for only 1 mounting post

Standard Cabling Cabinet	Cat6A Cabling Cabinet	Unit Height	Width (mm)	Depth (mm)
A2768RNSCC	A2768RNSCC-A	27U	600	875
A2761RNSCC	A2761RNSCC-A	27U	600	1000
A4268RNSCC	A4268RNSCC-A	42U	600	875
A4261RNSCC	A4261RNSCC-A	42U	600	1000
A4768RNSCC	A4768RNSCC-A	47U	600	875
A4761RNSCC	A4761RNSCC-A	47U	600	1000

Active Cabling Cabinet	Cat6A Active Cabling Cabinet	Unit Height	Width (mm)	Depth (mm)
A2788RNACC	A2788RNACC-A	27U	800	875
A2781RNACC	A2781RNACC-A	27U	800	1000
A4288RNACC	A4288RNACC-A	42U	800	875
A4281RNACC	A4281RNACC-A	42U	800	1000
A4788RNACC	A4788RNACC-A	47U	800	875
A4781RNACC	A4781RNACC-A	47U	800	1000

Återförsäljare:

**Tre Röda AB**  
 TillingeHagby 7 - 745 94 ENKÖPING  
 Tel: 08-560 200 22  
 e-post: [info@treroda.nu](mailto:info@treroda.nu)  
 http: [www.treroda.nu](http://www.treroda.nu)



## HellermannTyton Network Sciences

HellermannTyton AB  
 Datavägen 5  
 Box 569  
 SE-175 26 JÄRFÄLLA  
 08-580 890 44  
[www.hellermanntyton.se](http://www.hellermanntyton.se)